



Turbo mode

When the air conditioner goes into Turbo mode, it will maximize its cooling or heating capacity, making the room cooler or warmer rapidly.



I FEEL

The remote control can keep track of the temperature at its current location and send the signal to the air conditioner, so it can optimize the room temperature for your maximum comfort.



Anti-fungus

The air conditioner will start the Anti-fungus feature after exiting cooling and dehumidifying mode. It helps prevent fungi and bacteria from spreading in order to maintain a healthy environment.



Horizontal swing

You can use the horizontal swing feature to adjust the airflow direction, if you prefer the air from the AC to blow sideways.

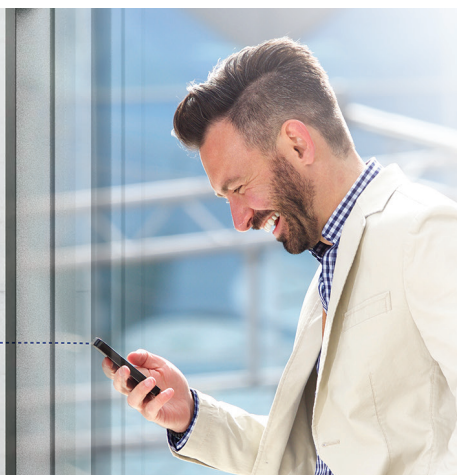


Intelligent defrosting

If the condenser freezes while in heating mode during the times of low outside temperature, the AC will start intelligent defrosting mode.

Wi-Fi

Wi-Fi feature means that Tesla air conditioner can also be controlled with mobile phones or other smart devices: an option that adds to your everyday convenience and comfort!





Features

I Feel / Follow me, Smart Air Flow, ECO, Super EMC performance, Self-diagnostic, Intelligent defrosting, Self-Cleaning Function, Anti-fungus Function, Anti-Rust Cabinet, Independent Dehumidification mode, Super Quiet Design, Low-noise airflow, Turbo mode, Auto mode, Sleep Mode, Fault Code Indication, Emergency button, Auto restart, Timer Auto turn off/on, 4-Fan Speed, Five-speed outdoor fan motor, Mono & multi compatibility, 8°C heating feature, Low-Temperature Heating/Cooling, Honeycomb filter, Washable filter, Dual side Drainage, Stability Protection, 56°C sterilization, Refrigerant Leakage Detect, Remote control, Louver position memory, Hidden led display, Display ON/OFF, Comfortable Cooling, Strong Cooling at 60°C, Rapid Cooling and Rapid Heating, RC holder, Hydrophilic Aluminum Fin, Backup Switch, Multi Fan Speed Equipped, I-clean, Top plate/cover, Auto Swing Louver function, Anti-Cold Air, Horizontal swing, Wi-Fi, Additional Health filter

Capacity			12000BTU	
Rated volt and frequency		V/Hz	220-240V~/50Hz/1P	
Mode			Cooling	Heating
Rated capacity		W	3400(1000~3770)	3420(1000~3810)
Power input		W	1130(290~1500)	922(290~1720)
Current input		A	5.8(1.5~9.0)	4.7(1.5~10.0)
SEER / Energy Class			6,1/A++	/
SCOP / Energy Class - average			/	4.0/A+
SCOP / Energy Class - warmer			/	5,1/A+++
Operating range (°C)		°C	15-53	-20-30
Energy consumption (per year, based on standard test results)		kWh	149	/
Energy consumption (per year, based on standard test results) - average		kWh	/	700
Energy consumption (per year, based on standard test results) - warmer		kWh	/	604
Dehumidifying		Kg/h	1,2	
Degree of protection (IN) / (OUT)		(IP)	IPX0/IPX4	
Class of electric protection (IN) / (OUT)		Class I / Class II	I/I	
Max. input consumption		W	1552	
Max. current		A	9	
Compressor		Model		
		Type	Rotary	
		Brand	RECHI	
Indoor	Indoor Air Circulation		m³/h	550
	Indoor Noise Level dB		dB(A)	50/47/43/35/32
	Net Dimension		mm	777×250×201
	Packing Dimension		mm	840×315×260
	Net Weight / Gross Weight		Kg	7,5/10
Outdoor	Outdoor Noise Level dB		dB(A)	50
	Net Dimension		mm	777×498×290
	Packing Dimension		mm	818×520×325
	Net Weight / Gross Weight		Kg	22/24
	Refrigerant Type			R32
	Refrigerant Weight		Kg	0,49
	GWP			675
	tCO ₂ eq.			0,33
	Max. Discharge / Max. Suction pressure		Mpa	3,7/1,2
Refrigerant piping		Liquid side / Gas side / Length	mm	Dg4/Dg8 (1/4-3/8)
		Max. refrigerant pipe length / Max. difference in level	m	25/10